

No preparation, no painting, no problem

---

*PVC-U skirting boards and architraves*



*welcome to*

# Quality skirting boards and architraves



Fitting skirting boards and architraves has never been simpler

Roomline PVC-U skirting boards and architraves are the ultimate no-hassle, no-maintenance, easy-fit and cost-effective way to add the essential finishing touches to any room. Roomline means no more time-consuming sanding and messy painting of timber skirting boards or architraves, and no more tricky mitring of skirting boards.



Reduce fitting times by up to 50%

Lengths of Roomline skirting boards simply slot together, with pre-moulded corner pieces to remove the need for mitring – helping you to finish the job in no time. With Roomline you can fit perfectly square, attractive skirting boards and architraves in up to half the time it would take to install and paint conventional timber products.





## Say goodbye to everyone's least favourite DIY chore

For homeowners, sanding and painting skirting boards and architraves is one of the most time-consuming, awkward and least-rewarding jobs involved in any decorating project.

With PVC-U Roomline products, it's a job you'll never have to do again. Your skirting boards and architraves will stay looking clean and fresh for life. Any marks or stains can simply be wiped away, leaving your room trims looking as good as the day they were fitted.



## Universal solution – whatever your needs

Whether you're a housebuilder constructing large numbers of homes, a Housing Association managing a portfolio of properties or a homeowner redecorating a room or two, Roomline PVC-U skirting boards and architraves are the ultimate hassle-free solution – drastically cutting installation times and eliminating lifetime maintenance.

◀ What ever the plan, roomline is suitable for wide range on projects



PVC-U roomline is perfect to frame any style of room ▶





Quality laminated finish

Robust structure

Integral rubber gasket

Room for cable tidying  
(behind the gasket)

## No sanding, painting or treatment – ever!

Roomline PVC-U skirting boards and architraves require no sanding, painting or treatment when they're fitted and throughout their life. That means no more fiddly and messy redecorating to keep your skirtings and architraves looking bright and fresh.

## Easy to install in half the time

The easy-fit Roomline system enables products to be installed up to 50% faster than traditional timber alternatives.

Roomline skirting boards simply slot together. Slot-in internal and external corner pieces mean there's no need for difficult and time-consuming mitring at corner joints.

Architraves are supplied in single door kits, with pre-moulded corner pieces to neaten up any joints.

Both architraves and skirting boards are glued in place using readily available adhesives, with no need for nails or screws.

## Looking good – for life

Roomline skirting boards and architraves are available in a range of colours, with a realistic woodgrain finish that gives you all the aesthetic benefits of timber without the maintenance and hassle.







## Colour options

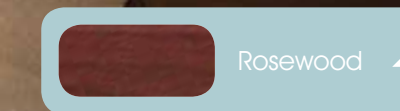
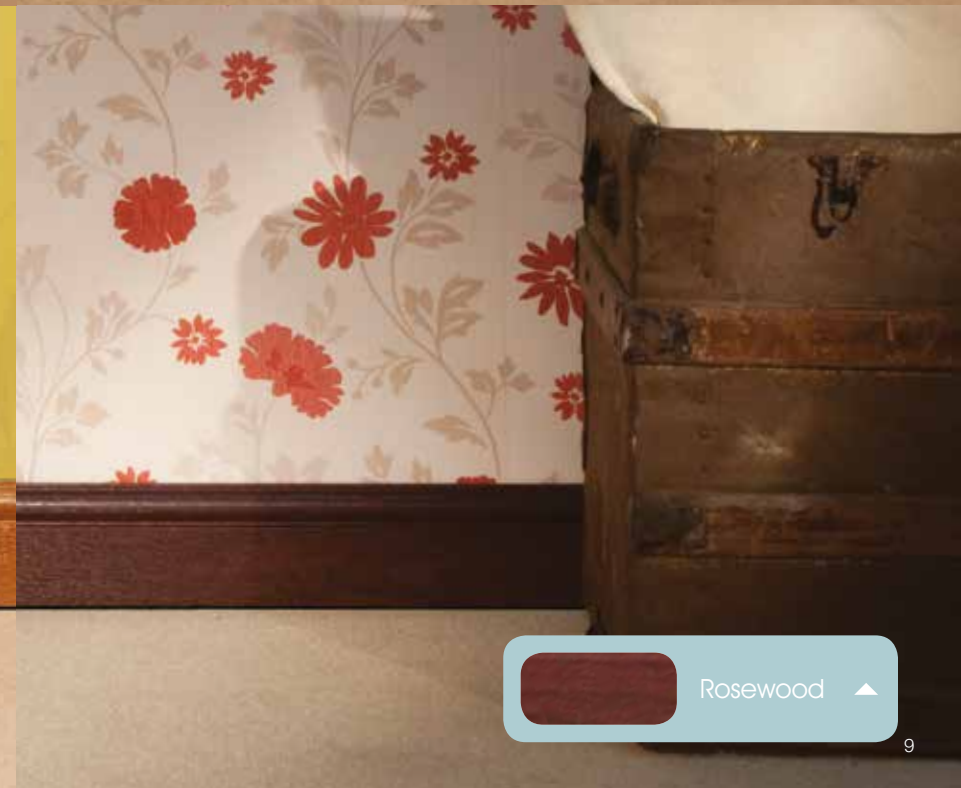
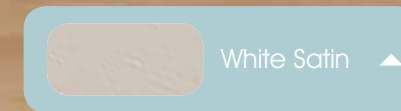
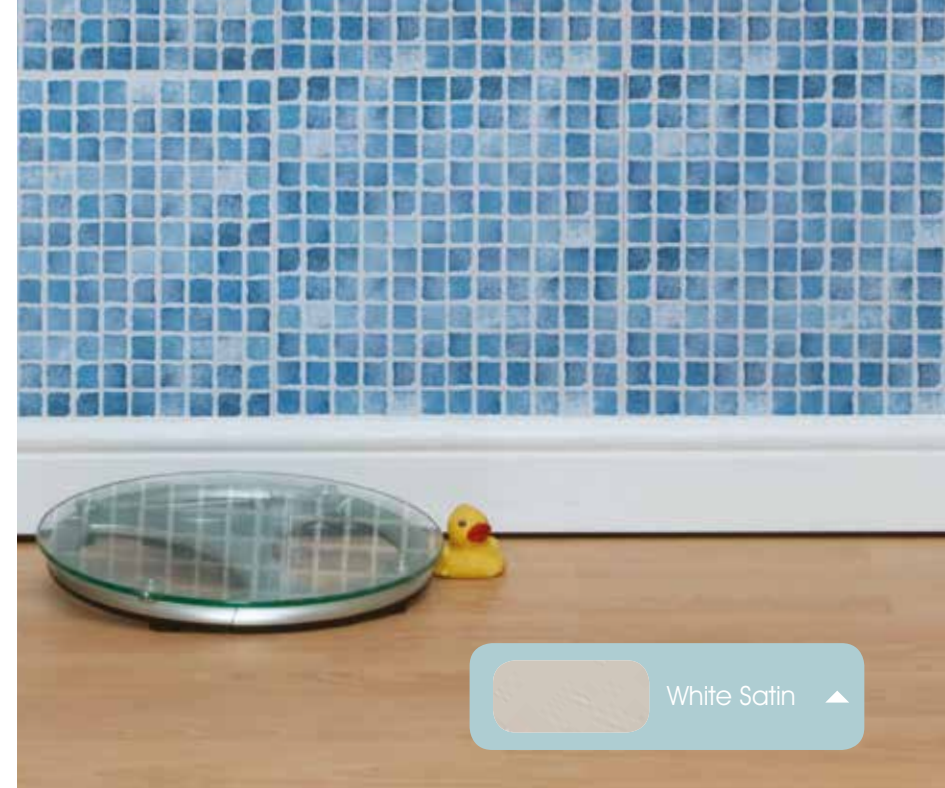
Roomline is available in White Satin, English Oak, Golden Oak and Rosewood finishes.

## Maintenance-free

PVC-U is maintenance-free. Any scuffs from shoes, toys or vacuum cleaners can simply be wiped off with the help of Eurocell cream cleaner. It means that skirting boards and architraves will always stay looking as good as new.

## Sizes available:

- |                       |                                    |
|-----------------------|------------------------------------|
| Skirting board:       | 100mm high x 15mm deep x 5m long   |
|                       | 100mm high x 15mm deep x 2.5m long |
| Architrave:           | 60mm wide x 15mm deep x 5.5m long  |
| Architrave door kits: | 60mm wide x 15mm deep x 2.25m long |
|                       | 60mm wide x 15mm deep x 1m long    |







## Handy cable tidying

Roomline skirting board provides a cable tidy solution which allows low-voltage cables to be run behind the gasket – something that is impossible with solid timber skirting. Telephone, TV and speaker cables can simply be tucked behind the skirting board out of sight, helping to keep rooms tidy and free from trailing wires.

## Robust, long-life performance

Roomline skirting boards and architraves are designed to withstand the knocks and bumps, wear and tear they will receive in a bustling home or busy office. They have a laminated finish, which is scratch-resistant, and a robust webbed structure which makes them tough, durable and impact-resistant.

When you choose Roomline products, you can rest assured that you'll never again have to worry about maintaining or replacing your skirting boards and architraves.

## Keep out the draughts

An integral rubber gasket running along the underside of Roomline skirting boards provide excellent draught-proofing around the perimeter of the room. It helps new homes to meet the latest air-tightness standards and helps to prevent energy wastage.





## Roomline PVC-U skirting boards and architraves

For high quality PVC-U skirting boards and architraves that frame your home chose Roomline from Eurocell.

Product specification is subject to change without notification. Please also note that colours shown are illustrative only, as the printing process does not allow 100% accurate colours to be reproduced.

EBPROOMDB/JUN13/CC



All together better